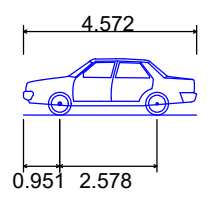


LEGEND BASEMENT -1 LEVEL PARKING:

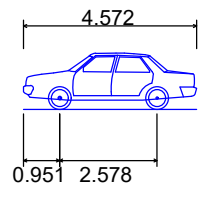
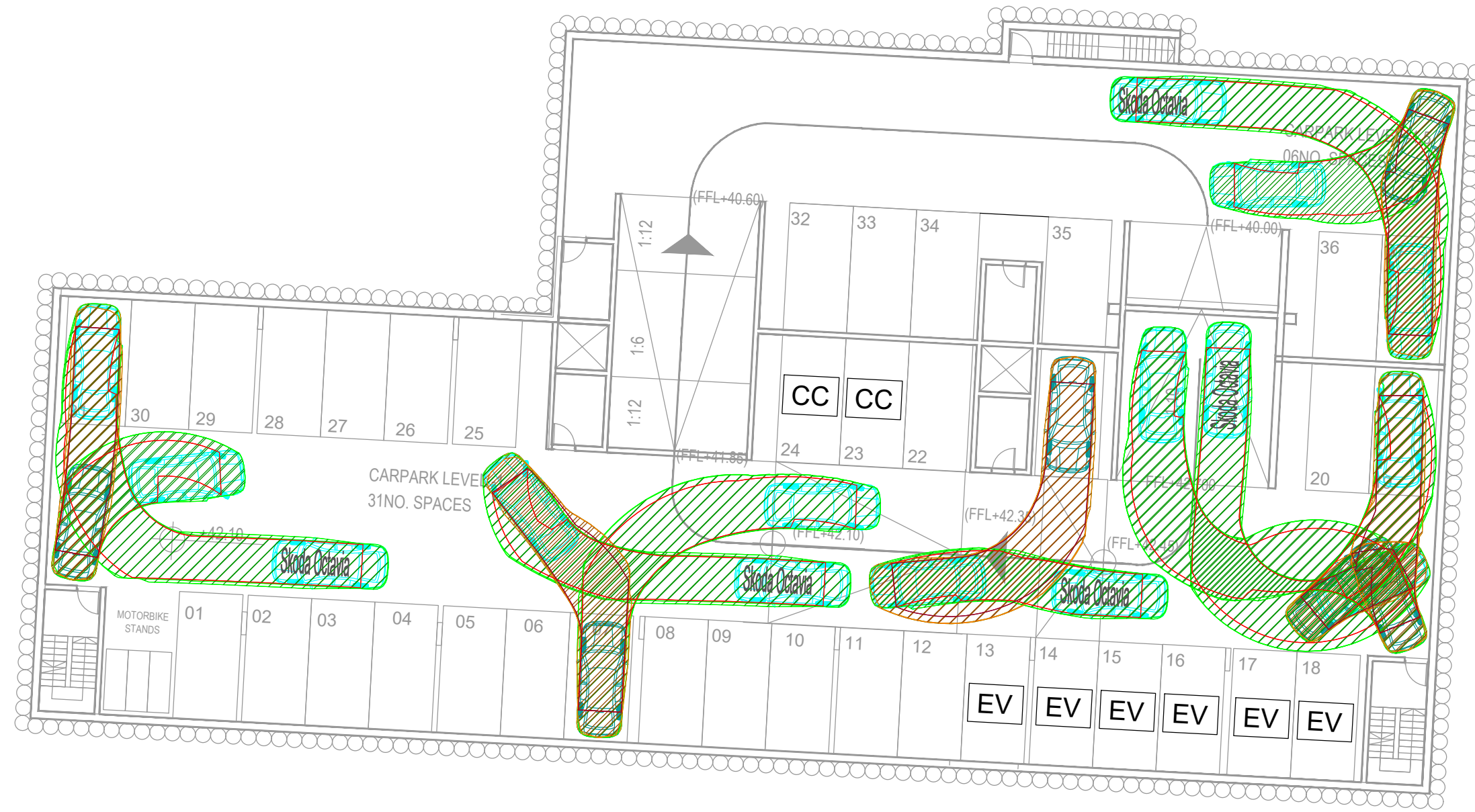
BLOCK B: TOTAL PARKING SPACES = 37 SPACES

- DIVIDED INTO = RESIDENTIAL PARKING = 29 SPACES
- RESIDENTIAL PARKING EV = 06 SPACES EV
- CAR CLUB PARKING = 02 SPACES CC



Skoda Octavia
 Overall Length 4.572m
 Overall Width 1.769m
 Overall Body Height 1.488m
 Min Body Ground Clearance 0.249m
 Max Track Width 1.713m
 Lock-to-lock time 4.00s
 Curb to Curb Turning Radius 5.100m

BASEMENT -1. ACCESS/EGRESS RAMP.
SCALE 1:200



Skoda Octavia
 Overall Length 4.572m
 Overall Width 1.769m
 Overall Body Height 1.488m
 Min Body Ground Clearance 0.249m
 Max Track Width 1.713m
 Lock-to-lock time 4.00s
 Curb to Curb Turning Radius 5.100m

BASEMENT -1. PARKING SPACES.
SCALE 1:200

PLANNING DRAWING.
 NOT FOR CONSTRUCTION.
 ALL LEVELS GIVEN ARE
 RELATIVE TO ORDNANCE DATUM.
 THIS DRAWING HAS BEEN ISSUED FOR INFORMATION
 PURPOSES ONLY AND MUST NOT BE USED
 FOR CONSTRUCTION UNDER ANY CIRCUMSTANCES

- NOTES**
- For setting out refer to Architect's drawings.
 - This drawing to be read in conjunction with all other Architectural and Engineering drawings and all other relevant drawings and Specifications.
 - DO NOT SCALE THIS DRAWING. Use figured dimensions only.
 - No part of this document may be reproduced or transmitted in any form or stored in any retrieval system of any nature without the written permission as copyright holder except as agreed for use on the project for which the document was originally issued.
 - Ordnance Survey Ireland Licence Number EN 0074021

Rev. No.	Date	REVISION NOTE	Drn. By	Chkd. By

Architect	OMP			
Project	Proposed Residential Development at Frankfort Castle.			
Title	Swept Path Analysis Basement -1			
Dwg. No.	H081-CSC-XX-B1-DR-C-0013			
Date	Drn. by	Chkd. by	Apprd. by	Scale
FEB 2021	JS	NB	NB	1:200 @A1

CS Consulting Group
 DUBLIN | LONDON | LIMERICK

Head Office
 19-22 Dame Street, Dublin 2.
 T: +353 (0)1 5490863
 e: info@csconsulting.ie
 w: www.csconsulting.ie

Quality Environment I.S. EN ISO 9001:2008
 Energy I.S. EN ISO 14001:2004
 Health & Safety OHSAS 18001:2007